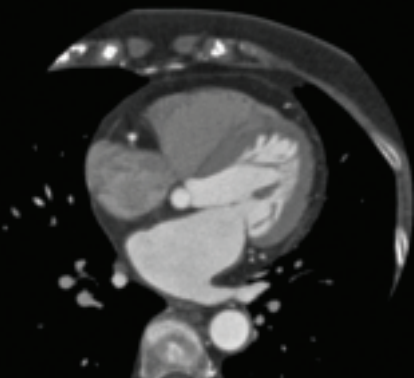
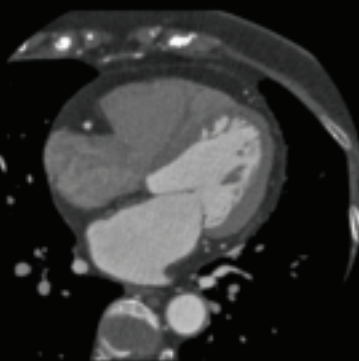


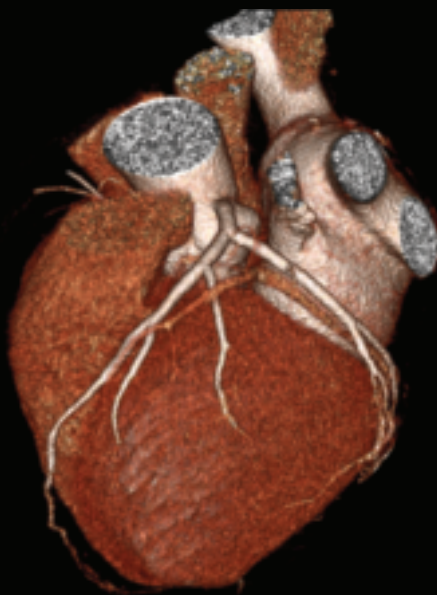
phaseXact™



Without phaseXact



With phaseXact



Automated Optimization of Cardiac CT Reconstruction

Taking the guesswork out of choosing the optimal phase for reconstruction, phaseXact automatically selects the cardiac phase that displays the least amount of motion.

- Improve temporal accuracy through automatic reconstruction based on a raw data motion map

- Reduce review time and storage space by eliminating sub-optimal scan images
- Increase productivity by reducing reconstruction time up to two-thirds compared to manual techniques

